

Product information presented here reflects conditions at time of publication. Consult factory regarding discrepancies or inconsistencies.



PUMP COMPANY

Zoeller Family of Water Solutions™

TECHNICAL DATA SHEET



APak® INDOOR ALARM

For indoor use only.

All electrical and safety codes must be followed in addition to the National Electrical Code and all applicable local codes.

SPECIFICATIONS

This alarm unit monitors liquid levels in lift pump chambers, sump pump basins, holding tanks, and other non-potable water applications.

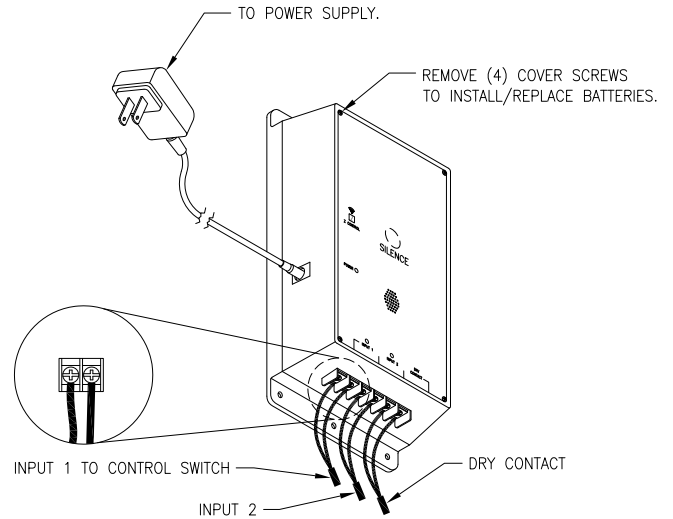
STANDARD FEATURES

- Green POWER light
- Red INPUT light
- Audible buzzer rated at 80 + db at 10' (3 m)
- Silence/Reset/Test button
- 120V, 60 Hz receptacle
- Battery backup power is supplied by 2 AA batteries, which are not included and must be purchased separately.
- NEMA 1 enclosure
- 6' (2 m) power cord
- 10-4011 comes with reed sensor
- 10-4012 comes with mechanical float switch

Z CONTROL® MODEL FEATURES

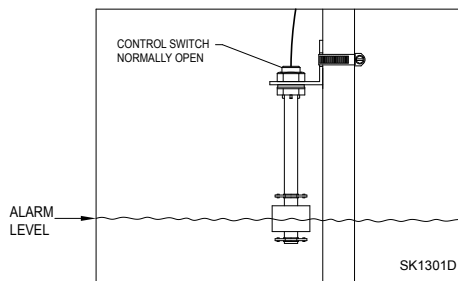
In addition to all standard features, Z Control® Model includes:

- Second input for additional monitoring ability
- Dry contacts for connection to home security system
- Z Control® Enabled
 - Internet connected through existing router
 - iPhone and Android app
 - Text, email, and push notifications
 - Remote monitoring of alarm status and battery levels; user can also remotely Silence and Reset the alarm
- 10-4013 comes with reed sensor
- 10-4014 comes with mechanical float switch



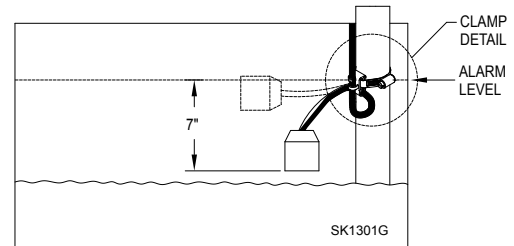
Z Control® model shown

SK3102



Reed Sensor Models

- 10-4011 Standard
- 10-4013 Z Control®



Mechanical Float Models

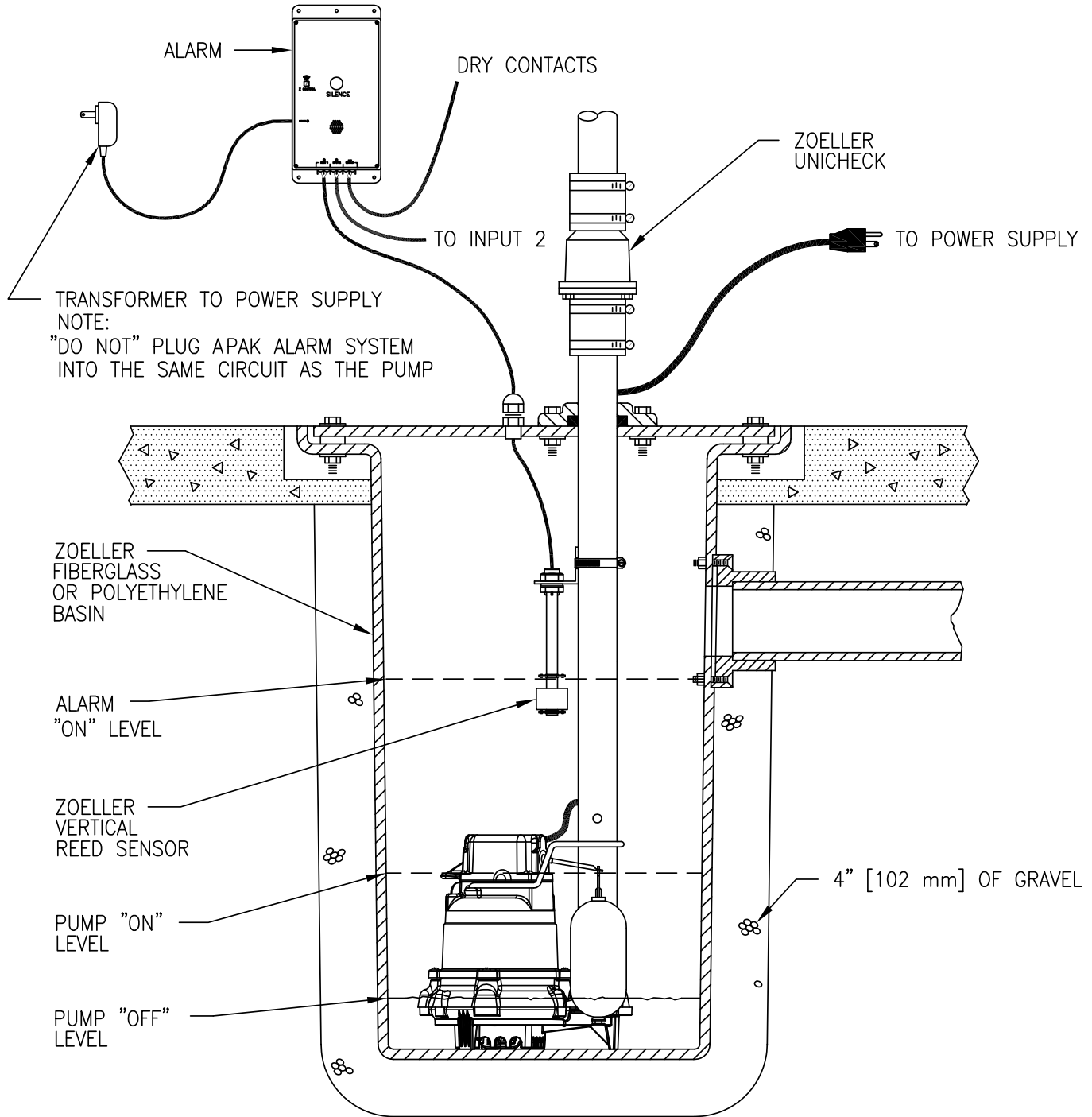
- 10-4012 Standard
- 10-4014 Z Control®



The APak® alarm can be used as AC-only, DC-only, or both:

| Power choice | Resulting alarm behavior | Do this |
|----------------|---|---|
| AC & batteries | Power outage and low battery alarms | Insert batteries and connect to power. |
| AC only | Power outage. No low battery alarm. | Hold button while powering up the alarm for about 5 seconds until green power LED turns on. This setting will be remembered by the alarm even after a power outage. If this setting is no longer desired, simply adding batteries will remove this setting. |
| Batteries only | Low battery alarm. No power outage alarm. | Insert batteries. The alarm will not detect loss of AC power if it is never applied. |

NOTE: Additional alarm behaviors described in installation instructions.



10-4013 pictured

SK3103