



PUMP COMPANY

Zoeller Family of Water Solutions™

MAIL TO: P.O. BOX 16347 • Louisville, KY 40256-0347
SHIP TO: 3649 Cane Run Road • Louisville, KY 40211-1961
(502) 778-2731 • 1 (800) 928-PUMP • FAX (502) 774-3624

visit our web site:
www.zoeller.com

Product information presented here reflects conditions at time of publication. Consult factory regarding discrepancies or inconsistencies.

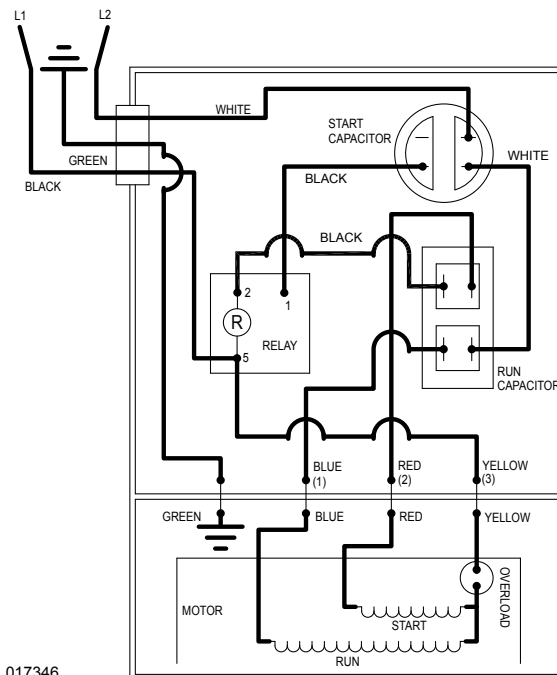
REPLACEMENT PARTS LIST FOR MODEL:

N801 NONAUTOMATIC 115V

Consult factory for all other models.

TO ORDER REPLACEMENT PARTS:
PLEASE FURNISH THE FOLLOWING INFORMATION:

- Model number
- Part number of pump
- Part number and description of part



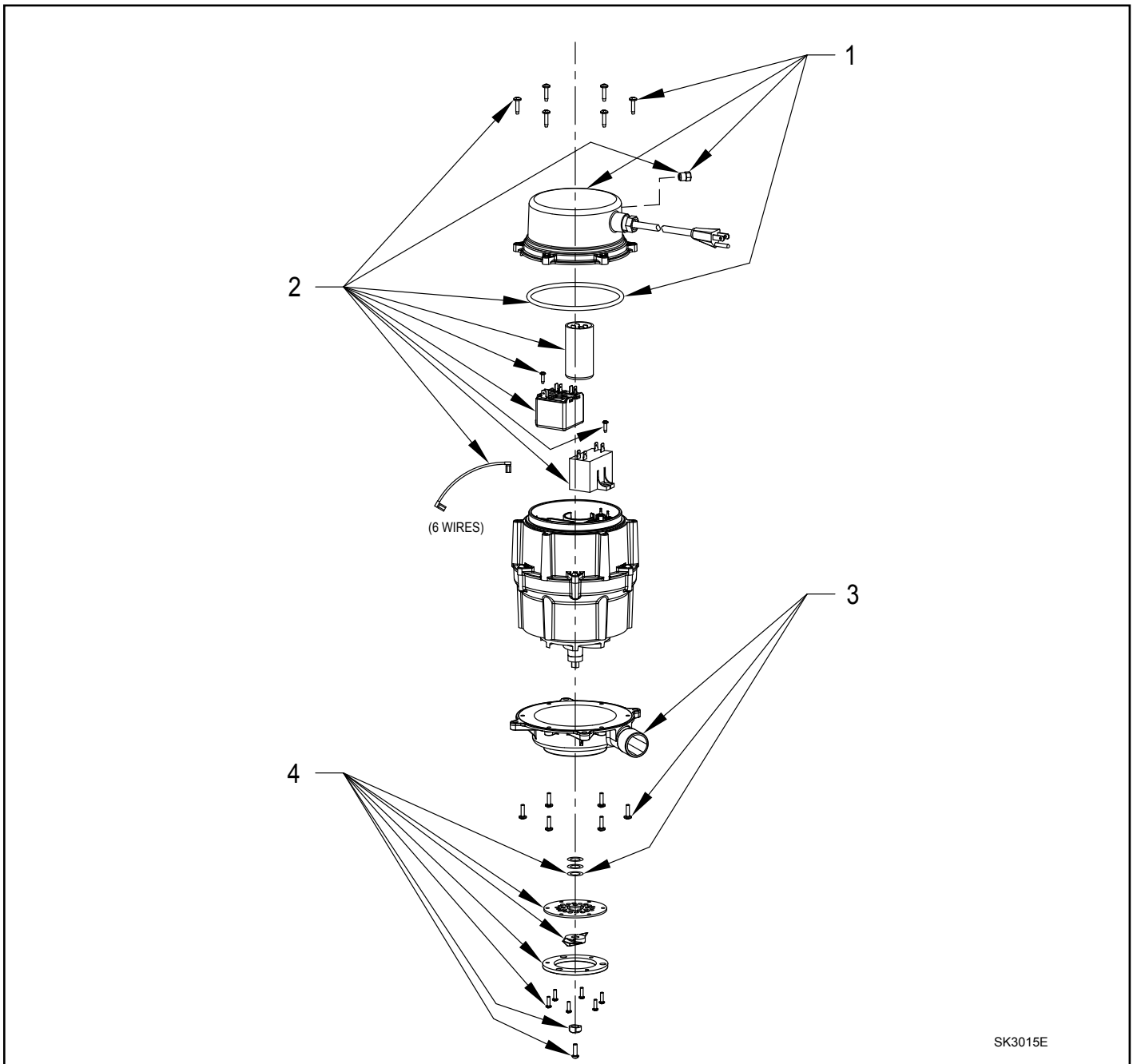
017346

WIRING DIAGRAM FOR MODEL
"N801-A"
7/11 thru Current

REPLACEMENT PARTS LIST FOR MODEL "N801".

MODELS:			N801-A
REF NO.	DESCRIPTION	QTY	7/11 thru Current
1	Cover & cord asm.	1	153046
2	Electrical kit	1	153047
3	Pump housing kit	1	153048
4	Cutter kit/Premium system	1	153052

REPLACEMENT PARTS ILLUSTRATION FOR MODEL "N801".



PUMP COMPANY

MAIL TO: P.O. BOX 16347 • Louisville, KY 40256-0347
 SHIP TO: 3649 Cane Run Road • Louisville, KY 40211-1961
 (502) 778-2731 • 1 (800) 928-PUMP • FAX (502) 774-3624

Your Peace of Mind is Our Top Priority®

visit our web site:
www.zoeller.com