

Product information presented here reflects conditions at time of publication. Consult factory regarding discrepancies or inconsistencies.

PUMP COMPANY

Zoeller Family of Water Solutions™

MAIL TO: P.O. BOX 16347 • Louisville, KY 40256-0347
SHIP TO: 3649 Cane Run Road • Louisville, KY 40211-1961
TEL: (502) 778-2731 • 1 (800) 928-PUMP • FAX: (502) 774-3624

visit our web site:
www.zoeller.com

REPLACEMENT PARTS LIST FOR MODELS:

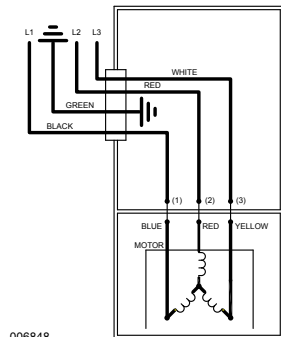
- E405 NON/AUTOMATIC/SINGLE SEAL/230V/1PH**
- WD405 AUTOMATIC W/WIRED IN FLOAT SWITCH/SINGLE SEAL/230V/1PH**
- XE405 NON/AUTOMATIC/REMOTE PILOT/ SINGLE SEAL/230V/1PH**
- I405 NON/AUTOMATIC/SINGLE SEAL/200V/1PH**
- J405 NON/AUTOMATIC/SINGLE SEAL/200V/3PH**
- F405 NON/AUTOMATIC/SINGLE SEAL/230V/3PH**
- G405 NON/AUTOMATIC/SINGLE SEAL/460V/3PH**
- BA405 NON/AUTOMATIC/SINGLE SEAL/575V/3PH**

Consult factory for all other models.

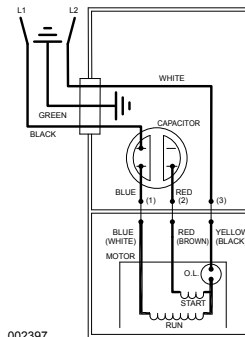
TO ORDER REPLACEMENT PARTS:

PLEASE FURNISH THE FOLLOWING INFORMATION:

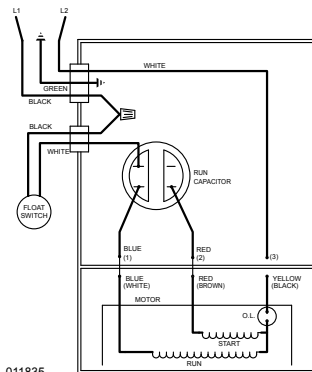
- Model number
- Part number of pump
- Part number and description of part



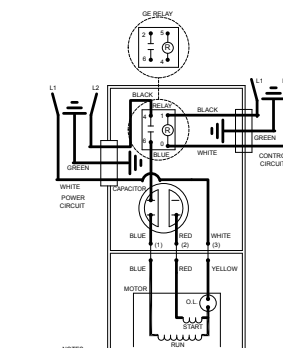
006848
WIRING DIAGRAM FOR MODELS
J405, F405, G405 AND BA405
ALL REVISIONS



002397
WIRING DIAGRAM FOR MODELS
E405 & I405
ALL REVISIONS



011835
WIRING DIAGRAM FOR MODEL WD405
ALL REVISIONS



004279
NOTES:
INSULATORS REQUIRED ON GE RELAY TERMINALS 2 & 5
ON RCN RELAY TERMINALS 1 & 4.
WIRING DIAGRAM FOR MODEL XE405
ALL REVISIONS

REPLACEMENT PARTS LIST FOR MODEL "E405"

See back page for illustration.

MODELS:				E405-A	E405-B	E405-C	E405-D	E405-E	E405-F
REF NO.	DESCRIPTION	QTY	NOTES	10/89 thru 12/91	1/92 thru 10/97	11/97 thru 6/98	7/98 thru 4/03	5/03 thru 5/10	6/10 thru Current
1	COVER & CORD ASM.	1	3	154791	154791	154791	154791	154791	154791
2	BOLT, EYE	1		005926	005926	005926	N/A	N/A	N/A
3	COVER-MACH.	1	3	005864	005864	005864	004372	014150	014150
4	• GASKET, CASE/COVER	1		001011	001011	001011	001011	001011	001011
5	RELAY, 230V	0		N/A	N/A	N/A	N/A	N/A	N/A
6	• WIRE PKG (5) WIRES 1.5/2 HP	1		004751	004751	004751	004751	004751	004751
7	CAPACITOR & CLAMP ASM.	1		002381	002381	010666	010666	010666	010666
8	HOUSING, MTR. & STR.	1	1 & 2	006097	006097	006097	006097	006097	018909
9	BEARING, SLEEVE	1		001012	001012	001012	001012	001012	N/A
	BEARING, RADIAL			N/A	N/A	N/A	N/A	N/A	006703
10	• PLUG, TEST-WHITE	2		034090	034090	034090	034090	034090	034090
11	• SEAL, THRU WALL TERM.	3		003402	003402	003402	003402	003402	003402
12	ROTOR & BRG.	1	2	006099	006947	006947	006947	006947	150882
13	• BEARING, RADIAL	1		001013	001013	001013	001013	001013	010069
14	• SEAL, MTR. HSG.	1		001014	001014	001014	001014	001014	001014
15	• OIL, DIELECTRIC	1		002383	002383	002383	002383	002383	011066
16	ADAPTER-MACH.	1		001003	001003	001003	001003	001003	001003
17	• WASHER, SEAL LOCATING & SNAP RING	0		N/A	N/A	N/A	N/A	N/A	N/A
18	• SEAL, SHAFT	1		002430	002430	002430	002430	002430	002430
19	ADAPTER-MACH. LOWER	0		N/A	N/A	N/A	N/A	N/A	N/A
20	IMPELLER ASM.	1		006150	007671	007671	007671	007671	007671
21	• KEY, WOODRUFF #404	1		N/A	006841	006841	006841	006841	006841
22	• WASHER, 7/16 STD. FLAT SS	1		N/A	006847	006847	006847	006847	006847
23	• NUT, 7/16-20 SS HEX	1		N/A	006846	006846	006846	006846	006846
24	HOUSING, PUMP-MACH.	1		005711	005711	005711	011784	011784	011784
25	CORD TERM. & SEAL POWER	1	3	154792	154792	154792	154792	154792	154792
26	• SEAL, CORD ASM. & STR. RLF.	1	3	004375	004375	004375	004375	015634	015634
27	CLAMP, STRAIN RELIEF	1		013764	013764	013764	013764	013764	013764
28	CLAMP, #6 AUTO-SS	1		N/A	001769	N/A	N/A	N/A	N/A
29	CORD, TERM. & SEAL CONTROL	0		N/A	N/A	N/A	N/A	N/A	N/A
30	• SEAL, CORD-ASM. & STR. RLF. CONTROL CORD	0		N/A	N/A	N/A	N/A	N/A	N/A
31	CLAMP, STRAIN RELIEF	0		N/A	N/A	N/A	N/A	N/A	N/A
32	• SCREW, #6-32X.25RHM SL TC STLGR.	3		001877	001877	001877	001877	001877	001877
33	SWITCH, FLT-TERM. & SEAL	0		N/A	N/A	N/A	N/A	N/A	N/A
34	SEAL, CORD-ASM. & STRAIN RELIEF	0		N/A	N/A	N/A	N/A	N/A	N/A
35	CONNECTOR, WIRENUT	0		N/A	N/A	N/A	N/A	N/A	N/A
36	• SCREW, .25-20X.75 HHM-SS	4		001916	001916	001916	001916	001916	001916
37	• SCREW, .25-20X1" HHM-SS	4		007790	007790	007790	007790	007790	007790
38	• SCREW, .313-18 X 1" HH CAP-SS	6		002608	002608	002608	002608	002608	002608
39	• WASHER, LOCK SS .312 ID	2		N/A	N/A	N/A	006402	006402	006402
40	BRACKET, LIFTING	1		N/A	N/A	N/A	010589	016801	016801
41	RESISTOR ASSEMBLY	0		N/A	N/A	N/A	N/A	N/A	N/A
42	SENSOR WIRES	0		N/A	N/A	N/A	N/A	N/A	N/A
43	SENSOR CORDAGE TERM. & SEAL	0		N/A	N/A	N/A	N/A	N/A	N/A
44	SEAL, CORD-ASM. STR. RLF.	0		N/A	N/A	N/A	N/A	N/A	N/A
45	• WASHER, FLAT SS.	2		N/A	N/A	N/A	N/A	008773	008773
▣	REBUILD KIT	1		006165	006165	006165	012376	016804	150993

• Items included in Rebuild Kit.

▣ Not Shown in Illustration.

NOTES:

- 1) Mtr. Hsg., Brg., Stator & Term (Item 8) are preassembled at the factory and must be replaced as a unit. Stator is permanently attached to the Motor Housing. Plug (Item 10); Seal, Thru Wall Term. (Item 11) and Bearing - Upper (Item 9) are replaceable.
- 2) When ordering Motor Housing, Bearing, Stator and Term. (item 8); or Rotor and Bearing (item 12), specify either GE or Emerson motor.
- 3) If an "X" follows Model No., or Date Mfg. on brass I.D. tag, consult factory for ordering of this part.
- 4) See FM0160 Parts Price Sheet for listing of parts prices.

© Copyright 2017 Zoeller® Co. All rights reserved.

REPLACEMENT PARTS LIST FOR MODEL "I405"

See back page for illustration.

REF NO.	DESCRIPTION	QTY	NOTES	MODELS:				
				I405-A	I405-B	I405-C	I405-D	I405-E
1	COVER & CORD ASM.	1	3	10/89 thru 12/91	1/92 thru 6/98	7/98 thru 4/03	5/03 thru 5/10	6/10 thru Current
2	BOLT, EYE	1		005926	005926	N/A	N/A	N/A
3	COVER-MACH.	1	3	005864	005864	004372	014150	014150
4	• GASKET, CASE/COVER	1		001011	001011	001011	001011	001011
5	RELAY, 230V	0		N/A	N/A	N/A	N/A	N/A
6	• WIRE PKG (5) WIRES 1.5/2 HP	1		004751	004751	004751	004751	004751
7	CAPACITOR & CLAMP ASM.	1		010666	010666	010666	010666	010666
8	HOUSING, MTR. & STR.	1	1 & 2	007808	007808	007808	007808	150961
9	BEARING, SLEEVE	1		001012	001012	001012	001012	N/A
	BEARING, RADIAL			N/A	N/A	N/A	N/A	006703
10	• PLUG, TEST-WHITE	2		034090	034090	034090	034090	034090
11	• SEAL, THRU WALL TERM.	3		003402	003402	003402	003402	003402
12	ROTOR & BRG.	1	2	006099	006947	006947	006947	150882
13	• BEARING, RADIAL	1		001013	001013	001013	001013	010069
14	• SEAL, MTR. HSG.	1		001014	001014	001014	001014	001014
15	• OIL, DIELECTRIC	1		002383	002383	002383	002383	011066
16	ADAPTER-MACH.	1		001003	001003	001003	001003	001003
17	• WASHER, SEAL LOCATING & SNAP RING	0		N/A	N/A	N/A	N/A	N/A
18	• SEAL, SHAFT	1		002430	002430	002430	002430	002430
19	ADAPTER-MACH. LOWER	0		N/A	N/A	N/A	N/A	N/A
20	IMPELLER ASM.	1		006150	007671	007671	007671	007671
21	• KEY, WOODRUFF #404	1		N/A	006841	006841	006841	006841
22	• WASHER, 7/16 STD. FLAT SS	1		N/A	006847	006847	006847	006847
23	• NUT, 7/16-20 SS HEX	1		N/A	006846	006846	006846	006846
24	HOUSING, PUMP-MACH.	1		005711	005711	011784	011784	011784
25	CORD TERM. & SEAL POWER	1	3	009685	009685	009685	014173	014173
26	• SEAL, CORD ASM. & STR. RLF.	1	3	004375	004375	004375	015634	015634
27	CLAMP, STRAIN RELIEF	1		N/A	N/A	N/A	013764	013764
28	CLAMP, #6 AUTO-SS	0		N/A	N/A	N/A	N/A	N/A
29	CORD, TERM. & SEAL CONTROL	0		N/A	N/A	N/A	N/A	N/A
30	• SEAL, CORD-ASM. & STR. RLF. CONTROL CORD	0		N/A	N/A	N/A	N/A	N/A
31	CLAMP, STRAIN RELIEF	0		N/A	N/A	N/A	N/A	N/A
32	• SCREW, #6-32X.25RHM SL TC STLGR.	3		001877	001877	001877	001877	001877
33	SWITCH, FLT-TERM. & SEAL	0		N/A	N/A	N/A	N/A	N/A
34	SEAL, CORD-ASM. & STRAIN RELIEF	0		N/A	N/A	N/A	N/A	N/A
35	CONNECTOR, WIRENUT	0		N/A	N/A	N/A	N/A	N/A
36	• SCREW, .25-20X.75 HHM-SS	4		001916	001916	001916	001916	001916
37	• SCREW, .25-20X1" HHM-SS	4		007790	007790	007790	007790	007790
38	• SCREW, .313-18 X 1" HH CAP-SS	6		002608	002608	002608	002608	002608
39	• WASHER, LOCK SS .312 ID	2		N/A	N/A	006402	006402	006402
40	BRACKET, LIFTING	1		N/A	N/A	010589	016801	016801
41	RESISTOR ASSEMBLY	0		N/A	N/A	N/A	N/A	N/A
42	SENSOR WIRES	0		N/A	N/A	N/A	N/A	N/A
43	SENSOR CORDAGE TERM. & SEAL	0		N/A	N/A	N/A	N/A	N/A
44	SEAL, CORD-ASM. STR. RLF.	0		N/A	N/A	N/A	N/A	N/A
45	• WASHER, FLAT SS.	2		N/A	N/A	N/A	008773	008773
▣	REBUILD KIT	1		006165	006165	012376	016804	150993

- Items included in Rebuild Kit.
- ▣ Not Shown in Illustration.

NOTES:

- 1) Mtr. Hsg., Brg., Stator & Term (Item 8) are preassembled at the factory and must be replaced as a unit. Stator is permanently attached to the Motor Housing. Plug (Item 10); Seal, Thru Wall Term. (Item 11) and Bearing - Upper (Item 9) are replaceable.
- 2) When ordering Motor Housing, Bearing, Stator and Term. (item 8); or Rotor and Bearing (item 12), specify either GE or Emerson motor.
- 3) If an "X" follows Model No., or Date Mfg. on brass I.D. tag, consult factory for ordering of this part.
- 4) See FM0160 Parts Price Sheet for listing of parts prices.

REPLACEMENT PARTS LIST FOR MODEL "WD405"

See back page for illustration.

MODELS:				WD405-A	WD405-B	WD405-C	WD405-D
REF NO.	DESCRIPTION	QTY	NOTES	2/98 thru 6/98	7/98 thru 4/03	5/03 thru 5/10	6/10 thru Current
1	COVER & CORD ASM.	1	3	154793	154793	154793	154793
2	BOLT, EYE	1		005926	N/A	N/A	N/A
3	COVER-MACH.	1	3	008860	008857	014152	014152
4	• GASKET, CASE/COVER	1		001011	001011	001011	001011
5	RELAY, 230V	0		N/A	N/A	N/A	N/A
6	• WIRE PKG (5) WIRES 1.5/2 HP	1		004751	004751	004751	004751
7	CAPACITOR & CLAMP ASM.	1		010666	010666	010666	010666
8	HOUSING, MTR. & STR.	1	1 & 2	006097	006097	006097	018909
9	BEARING, SLEEVE	1		001012	001012	001012	N/A
	BEARING, RADIAL			N/A	N/A	N/A	006703
10	• PLUG, TEST-WHITE	2		034090	034090	034090	034090
11	• SEAL, THRU WALL TERM.	3		003402	003402	003402	003402
12	ROTOR & BRG.	1	2	006947	006947	006947	150882
13	• BEARING, RADIAL	1		001013	001013	001013	010069
14	• SEAL, MTR. HSG.	1		001014	001014	001014	001014
15	• OIL, DIELECTRIC	1		002383	002383	002383	011066
16	ADAPTER-MACH.	1		001003	001003	001003	001003
17	• WASHER, SEAL LOCATING & SNAP RING	0		N/A	N/A	N/A	N/A
18	• SEAL, SHAFT	1		002430	002430	002430	002430
19	ADAPTER-MACH. LOWER	0		N/A	N/A	N/A	N/A
20	IMPELLER ASM.	1		007671	007671	007671	007671
21	• KEY, WOODRUFF #404	1		006841	006841	006841	006841
22	• WASHER, 7/16 STD. FLAT SS	1		006847	006847	006847	006847
23	• NUT, 7/16-20 SS HEX	1		006846	006846	006846	006846
24	HOUSING, PUMP-MACH.	1		005711	011784	011784	011784
25	CORD TERM. & SEAL POWER	1	3	154794	154794	154794	154794
26	• SEAL, CORD ASM. & STR. RLF.	1	3	004375	004375	015634	015634
27	CLAMP, STRAIN RELIEF	1		013764	013764	013764	013764
28	CLAMP, #6 AUTO-SS	0		N/A	N/A	N/A	N/A
29	CORD, TERM. & SEAL CONTROL	0		N/A	N/A	N/A	N/A
30	• SEAL, CORD-ASM. & STR. RLF. CONTROL CORD	0		N/A	N/A	N/A	N/A
31	CLAMP, STRAIN RELIEF	0		N/A	N/A	N/A	N/A
32	• SCREW, #6-32X.25RHM SL TC STLGR.	3		001877	001877	001877	001877
33	SWITCH, FLT-TERM. & SEAL	1		011876	011876	011876	011876
34	SEAL, CORD-ASM. & STRAIN RELIEF	1		094032	094032	094032	094032
35	CONNECTOR, WIRENUT	1		011868	011868	011868	011868
36	• SCREW, .25-20X.75 HHM-SS	4		001916	001916	001916	001916
37	• SCREW, .25-20X1" HHM-SS	4		007790	007790	007790	007790
38	• SCREW, .313-18 X 1" HH CAP-SS	6		002608	002608	002608	002608
39	• WASHER, LOCK SS .312 ID	2		N/A	006402	006402	006402
40	BRACKET, LIFTING	1		N/A	010589	016801	016801
41	RESISTOR ASSEMBLY	0		N/A	N/A	N/A	N/A
42	SENSOR WIRES	0		N/A	N/A	N/A	N/A
43	SENSOR CORDAGE TERM. & SEAL	0		N/A	N/A	N/A	N/A
44	SEAL, CORD-ASM. STR. RLF.	0		N/A	N/A	N/A	N/A
45	• WASHER, FLAT SS.	2		N/A	N/A	008773	008773
▣	REBUILD KIT	1		011878	012379	016804	150993

• Items included in Rebuild Kit.

▣ Not Shown in Illustration.

NOTES:

- 1) Mtr. Hsg., Brg., Stator & Term (Item 8) are preassembled at the factory and must be replaced as a unit. Stator is permanently attached to the Motor Housing. Plug (Item 10); Seal, Thru Wall Term. (Item 11) and Bearing - Upper (Item 9) are replaceable.
- 2) When ordering Motor Housing, Bearing, Stator and Term. (item 8); or Rotor and Bearing (item 12), specify either GE or Emerson motor.
- 3) If an "X" follows Model No., or Date Mfg. on brass I.D. tag, consult factory for ordering of this part.
- 4) See FM0160 Parts Price Sheet for listing of parts prices.

REPLACEMENT PARTS LIST FOR MODEL "XE405"

See back page for illustration.

MODELS:				XE405-A	XE405-B	XE405-C	XE405-D	XE405-E
REF NO.	DESCRIPTION	QTY	NOTES	8/89 thru 12/91	1/92 thru 10/97	11/97 thru 3/98	4/98 thru 6/98	7/98 thru 4/03
1	COVER & CORD ASM.	1	3	006151	006151	006151	011041	012464
2	BOLT, EYE	1		005926	005926	005926	005926	N/A
3	COVER-MACH.	1	3	005865	005865	005865	008860	004373
4	• GASKET, CASE/COVER	1		001011	001011	001011	001011	001011
5	RELAY, 230V	1		217093	217093	217093	217093	217093
6	• WIRE PKG (5) WIRES 1.5/2 HP	1		004751	004751	004751	004751	004751
7	CAPACITOR & CLAMP ASM.	1		002381	002381	010666	010666	010666
8	HOUSING, MTR. & STR.	1	1 & 2	006097	006097	006097	006097	006097
9	BEARING, SLEEVE	1		001012	001012	001012	001012	001012
10	• PLUG, TEST-WHITE	2		034090	034090	034090	034090	034090
11	• SEAL, THRU WALL TERM.	3		003402	003402	003402	003402	003402
12	ROTOR & BRG.	1	2	006099	006947	006947	006947	006947
13	• BEARING, RADIAL	1		001013	001013	001013	001013	001013
14	• SEAL, MTR. HSG.	1		001014	001014	001014	001014	001014
15	• OIL, DIELECTRIC	1		002383	002383	002383	002383	002383
16	ADAPTER-MACH.	1		001003	001003	001003	001003	001003
17	• WASHER, SEAL LOCATING & SNAP RING	0		N/A	N/A	N/A	N/A	N/A
18	• SEAL, SHAFT	1		002430	002430	002430	002430	002430
19	ADAPTER-MACH. LOWER	0		N/A	N/A	N/A	N/A	N/A
20	IMPELLER ASM.	1		006150	007671	007671	007671	007671
21	• KEY, WOODRUFF #404	1		N/A	006841	006841	006841	006841
22	• WASHER, 7/16 STD. FLAT SS	1		N/A	006847	006847	006847	006847
23	• NUT, 7/16-20 SS HEX	1		N/A	006846	006846	006846	006846
24	HOUSING, PUMP-MACH.	1		005711	005711	005711	005711	011784
25	CORD TERM. & SEAL POWER	1	3	004376	004376	004376	004376	004376
26	• SEAL, CORD ASM. & STR. RLF.	1	3	004375	004375	004375	004375	004375
27	CLAMP, STRAIN RELIEF	1		N/A	004099	N/A	N/A	N/A
28	CLAMP, #6 AUTO-SS	1		N/A	001769	N/A	N/A	N/A
29	CORD, TERM. & SEAL CONTROL	1	3	004377	004377	004377	011042	011042
30	• SEAL, CORD-ASM. & STR. RLF. CONTROL CORD	1	3	004378	004378	004378	094032	094032
31	CLAMP, STRAIN RELIEF	1		N/A	N/A	N/A	001770	001770
32	• SCREW, #6-32X.25RHM SL TC STLGR.	4		001877	001877	001877	001877	001877
33	SWITCH, FLT-TERM. & SEAL	0		N/A	N/A	N/A	N/A	N/A
34	SEAL, CORD-ASM. & STRAIN RELIEF	0		N/A	N/A	N/A	N/A	N/A
35	CONNECTOR, WIRENUT	0		N/A	N/A	N/A	N/A	N/A
36	• SCREW, .25-20X.75 HHM-SS	4		001916	001916	001916	001916	001916
37	• SCREW, .25-20X1" HHM-SS	4		007790	007790	007790	007790	007790
38	• SCREW, .313-18 X 1" HH CAP-SS	6		002608	002608	002608	002608	002608
39	• WASHER, LOCK SS .312 ID	2		N/A	N/A	N/A	006402	006402
40	BRACKET, LIFTING	1		N/A	N/A	N/A	010589	010589
41	RESISTOR ASSEMBLY	0		N/A	N/A	N/A	N/A	N/A
42	SENSOR WIRES	0		N/A	N/A	N/A	N/A	N/A
43	SENSOR CORDAGE TERM. & SEAL	0		N/A	N/A	N/A	N/A	N/A
44	SEAL, CORD-ASM. STR. RLF.	0		N/A	N/A	N/A	N/A	N/A
45	• WASHER, FLAT SS.	2		N/A	N/A	N/A	N/A	N/A
▣	REBUILD KIT	1		006165	006165	006165	012377	012377

• Items included in Rebuild Kit.

▣ Not Shown in Illustration.

NOTES:

- 1) Mtr. Hsg., Brg., Stator & Term (Item 8) are preassembled at the factory and must be replaced as a unit. Stator is permanently attached to the Motor Housing. Plug (Item 10); Seal, Thru Wall Term. (Item 11) and Bearing - Upper (Item 9) are replaceable.
- 2) When ordering Motor Housing, Bearing, Stator and Term. (item 8); or Rotor and Bearing (item 12), specify either GE or Emerson motor.
- 3) If an "X" follows Model No., or Date Mfg. on brass I.D. tag, consult factory for ordering of this part.
- 4) See FM0160 Parts Price Sheet for listing of parts prices.

REPLACEMENT PARTS LIST FOR MODELS "F405" & "G405"

See back page for illustration.

REF NO.	DESCRIPTION	QTY	NOTES	MODELS:				G405-A	G405-B	G405-C	G405-D
				F405-A	F405-B	F405-C	F405-D				
				10/89 thru 12/91	1/92 thru 6/98	7/98 thru 5/10	6/10 thru Current	10/89 thru 12/91	1/92 thru 6/98	7/98 thru 5/10	6/10 thru Current
1	COVER & CORD ASM.	1	3	014165	014165	014161	014161	011332	011332	012466	012466
2	BOLT, EYE	1		005926	005926	N/A	N/A	005926	005926	N/A	N/A
3	COVER-MACH.	1	3	014151	014151	014150	014150	005863	005863	001077	001077
4	• GASKET, CASE/COVER	1		001011	001011	001011	001011	001011	001011	001011	001011
5	RELAY, 230V	0		N/A	N/A	N/A	N/A	N/A	N/A	N/A	N/A
6	• WIRE PKG (5) WIRES 1.5/2 HP	0		N/A	N/A	N/A	N/A	N/A	N/A	N/A	N/A
7	CAPACITOR & CLAMP ASM.	0		N/A	N/A	N/A	N/A	N/A	N/A	N/A	N/A
8	HOUSING, MTR. & STR.	1	1 & 2	008592	008592	008592	150963	006343	006343	006343	150964
9	BEARING, SLEEVE	1		001012	001012	001012	N/A	001012	001012	001012	N/A
	BEARING, RADIAL			N/A	N/A	N/A	006703	N/A	N/A	N/A	006703
10	• PLUG, TEST-WHITE	2		034090	034090	034090	034090	034090	034090	034090	034090
11	• SEAL, THRU WALL TERM.	3		003402	003402	003402	003402	003402	003402	003402	003402
12	ROTOR & BRG.	1	2	006342	006948	006948	150882	006342	006948	006948	150882
13	• BEARING, RADIAL	1		001013	001013	001013	010069	001013	001013	001013	010069
14	• SEAL, MTR. HSG.	1		001014	001014	001014	001014	001014	001014	001014	001014
15	• OIL, DIELECTRIC	1		002383	002383	002383	011066	002383	002383	002383	011066
16	ADAPTER-MACH.	1		001003	001003	001003	001003	001003	001003	001003	001003
17	• WASHER, SEAL LOCATING & SNAP RING	0		N/A	N/A	N/A	N/A	N/A	N/A	N/A	N/A
18	• SEAL, SHAFT	1		002430	002430	002430	002430	002430	002430	002430	002430
19	ADAPTER-MACH. LOWER	0		N/A	N/A	N/A	N/A	N/A	N/A	N/A	N/A
20	IMPELLER ASM.	1		006341	007671	007671	007671	006341	007671	007671	007671
21	• KEY, WOODRUFF #404	1		N/A	006841	006841	006841	N/A	006841	006841	006841
22	• WASHER, 7/16 STD. FLAT SS	1		N/A	006847	006847	006847	N/A	006847	006847	006847
23	• NUT, 7/16-20 SS HEX	1		N/A	006846	006846	006846	N/A	006846	006846	006846
24	HOUSING, PUMP-MACH.	1		005711	005711	011784	011784	005711	005711	011784	011784
25	CORD TERM. & SEAL POWER	1	3	014177	014177	014177	014177	005131	005131	005131	005131
26	• SEAL, CORD ASM. & STR. RLF.	1	3	015634	015634	015634	015634	094032	094032	094032	094032
27	CLAMP, STRAIN RELIEF	1	3	013764	013764	013764	013764	001770	001770	001770	001770
28	CLAMP, #6 AUTO-SS	0		N/A	N/A	N/A	N/A	N/A	N/A	N/A	N/A
29	CORD, TERM. & SEAL CONTROL	0		N/A	N/A	N/A	N/A	N/A	N/A	N/A	N/A
30	• SEAL, CORD-ASM. & STR. RLF. CONTROL CORD	0		N/A	N/A	N/A	N/A	N/A	N/A	N/A	N/A
31	CLAMP, STRAIN RELIEF	0		N/A	N/A	N/A	N/A	N/A	N/A	N/A	N/A
32	• SCREW, #6-32X.25RHM SL TC STLGR.	1		001877	001877	001877	001877	001877	001877	001877	001877
33	SWITCH, FLT-TERM. & SEAL	0		N/A	N/A	N/A	N/A	N/A	N/A	N/A	N/A
34	SEAL, CORD-ASM. & STRAIN RELIEF	0		N/A	N/A	N/A	N/A	N/A	N/A	N/A	N/A
35	CONNECTOR, WIRENUT	0		N/A	N/A	N/A	N/A	N/A	N/A	N/A	N/A
36	• SCREW, .25-20X.75 HHM-SS	4		001916	001916	001916	001916	001916	001916	001916	001916
37	• SCREW, .25-20X1" HHM-SS	4		007790	007790	007790	007790	007790	007790	007790	007790
38	• SCREW, .313-18 X 1" HH CAP-SS	6		002608	002608	002608	002608	002608	002608	002608	002608
39	• WASHER, LOCK SS .312 ID	2		N/A	N/A	006402	006402	N/A	N/A	006402	006402
40	BRACKET, LIFTING	1		N/A	N/A	016801	016801	N/A	N/A	016801	016801
41	RESISTOR ASSEMBLY	0		N/A	N/A	N/A	N/A	N/A	N/A	N/A	N/A
42	SENSOR WIRES	0		N/A	N/A	N/A	N/A	N/A	N/A	N/A	N/A
43	SENSOR CORDAGE TERM. & SEAL	0		N/A	N/A	N/A	N/A	N/A	N/A	N/A	N/A
44	SEAL, CORD-ASM. STR. RLF.	0		N/A	N/A	N/A	N/A	N/A	N/A	N/A	N/A
45	• WASHER, FLAT SS.	2		N/A	N/A	008773	008773	N/A	N/A	008773	008773
▫	REBUILD KIT	1		011334	011334	016804	150993	011334	011334	016804	150993

• Items included in Rebuild Kit.

▫ Not Shown in Illustration.

NOTES:

- 1) Mtr. Hsg., Brg., Stator & Term (Item 8) are preassembled at the factory and must be replaced as a unit. Stator is permanently attached to the Motor Housing. Plug (Item 10); Seal, Thru Wall Term. (Item 11) and Bearing - Upper (Item 9) are replaceable.
- 2) When ordering Motor Housing, Bearing, Stator and Term. (item 8); or Rotor and Bearing (item 12), specify either GE or Emerson motor.
- 3) If an "X" follows Model No., or Date Mfg. on brass I.D. tag, consult factory for ordering of this part.
- 4) See FM0160 Parts Price Sheet for listing of parts prices.

REPLACEMENT PARTS LIST FOR MODELS "J405" & "BA405"

See back page for illustration.

REF NO.	DESCRIPTION	QTY	NOTES	MODELS:						BA405-A	BA405-B	BA405-C
				J405-A	J405-B	J405-C	J405-D	J405-E	J405-F			
				10/89 thru 12/89	1/90 thru 12/91	1/92 thru 6/98	7/98 thru 4/03	5/03 thru 5/10	6/10 thru Current	6/96 thru 6/98	7/98 thru 5/10	6/10 thru Current
1	COVER & CORD ASM.	1	3	011332	012190	012190	012465	014161	014161	011332	012466	012466
2	BOLT, EYE	1		005926	005926	005926	N/A	N/A	N/A	005926	N/A	N/A
3	COVER-MACH.	1	3	005863	005864	005864	004372	014150	014150	005863	001077	001077
4	• GASKET, CASE/COVER	1		001011	001011	001011	001011	001011	001011	001011	001011	001011
5	RELAY, 230V	0		N/A	N/A	N/A	N/A	N/A	N/A	N/A	N/A	N/A
6	• WIRE PKG (5) WIRES 1.5/2 HP	0		N/A	N/A	N/A	N/A	N/A	N/A	N/A	N/A	N/A
7	CAPACITOR & CLAMP ASM.	0		N/A	N/A	N/A	N/A	N/A	N/A	N/A	N/A	N/A
8	HOUSING, MTR. & STR.	1	1 & 2	012193	012193	012193	012193	012193	150962	011333	011333	150965
9	BEARING, SLEEVE	1		001012	001012	001012	001012	001012	N/A	001012	001012	N/A
	BEARING, RADIAL			N/A	N/A	N/A	N/A	N/A	006703	N/A	N/A	006703
10	• PLUG, TEST-WHITE	2		034090	034090	034090	034090	034090	034090	034090	034090	034090
11	• SEAL, THRU WALL TERM.	3		003402	003402	003402	003402	003402	003402	003402	003402	003402
12	ROTOR & BRG.	1	2	006342	006342	006948	006948	006948	150882	006948	006948	150882
13	• BEARING, RADIAL	1		001013	001013	001013	001013	001013	010069	001013	001013	010069
14	• SEAL, MTR. HSG.	1		001014	001014	001014	001014	001014	001014	001014	001014	001014
15	• OIL, DIELECTRIC	1		002383	002383	002383	002383	002383	011066	002383	002383	011066
16	ADAPTER-MACH.	1		001003	001003	001003	001003	001003	001003	001003	001003	001003
17	• WASHER, SEAL LOCATING & SNAP RING	0		N/A	N/A	N/A	N/A	N/A	N/A	N/A	N/A	N/A
18	• SEAL, SHAFT	1		002430	002430	002430	002430	002430	002430	002430	002430	002430
19	ADAPTER-MACH. LOWER	0		N/A	N/A	N/A	N/A	N/A	N/A	N/A	N/A	N/A
20	IMPELLER ASM.	1		006341	006341	007671	007671	007671	007671	007671	007671	007671
21	• KEY, WOODRUFF #404	1		N/A	N/A	006841	006841	006841	006841	006841	006841	006841
22	• WASHER, 7/16 STD. FLAT SS	1		N/A	N/A	006847	006847	006847	006847	006847	006847	006847
23	• NUT, 7/16-20 SS HEX	1		N/A	N/A	006846	006846	006846	006846	006846	006846	006846
24	HOUSING, PUMP-MACH.	1		005711	005711	005711	011784	011784	011784	005711	011784	011784
25	CORD TERM. & SEAL POWER	1	3	005131	012189	012189	012189	014177	014177	005131	005131	005131
26	• SEAL, CORD ASM. & STR. RLF.	1	3	094032	004375	004375	004375	015634	015634	094032	094032	094032
27	CLAMP, STRAIN RELIEF	1	3	N/A	N/A	N/A	N/A	013764	013764	001770	001770	001770
28	CLAMP, #6 AUTO-SS	0		N/A	N/A	N/A	N/A	N/A	N/A	N/A	N/A	N/A
29	CORD, TERM. & SEAL CONTROL	0		N/A	N/A	N/A	N/A	N/A	N/A	N/A	N/A	N/A
30	• SEAL, CORD-ASM. & STR. RLF. CONT. CD.	0		N/A	N/A	N/A	N/A	N/A	N/A	N/A	N/A	N/A
31	CLAMP, STRAIN RELIEF	0		N/A	N/A	N/A	N/A	N/A	N/A	N/A	N/A	N/A
32	• SCREW, #6-32X.25RHM SL TC STLGR.	1		001877	001877	001877	001877	001877	001877	001877	001877	001877
33	SWITCH, FLT-TERM. & SEAL	0		N/A	N/A	N/A	N/A	N/A	N/A	N/A	N/A	N/A
34	SEAL, CORD-ASM. & STRAIN RELIEF	0		N/A	N/A	N/A	N/A	N/A	N/A	N/A	N/A	N/A
35	CONNECTOR, WIRENUT	0		N/A	N/A	N/A	N/A	N/A	N/A	N/A	N/A	N/A
36	• SCREW, .25-20X.75 HHM-SS	4		001916	001916	001916	001916	001916	001916	001916	001916	001916
37	• SCREW, .25-20X1" HHM-SS	4		007790	007790	007790	007790	007790	007790	007790	007790	007790
38	• SCREW, .313-18 X 1" HH CAP-SS	6		002608	002608	002608	002608	002608	002608	002608	002608	002608
39	• WASHER, LOCK SS .312 ID	2		N/A	N/A	N/A	006402	006402	006402	N/A	006402	006402
40	BRACKET, LIFTING	1		N/A	N/A	N/A	010589	016801	016801	N/A	016801	016801
41	RESISTOR ASSEMBLY	0		N/A	N/A	N/A	N/A	N/A	N/A	N/A	N/A	N/A
42	SENSOR WIRES	0		N/A	N/A	N/A	N/A	N/A	N/A	N/A	N/A	N/A
43	SENSOR CORDAGE TERM. & SEAL	0		N/A	N/A	N/A	N/A	N/A	N/A	N/A	N/A	N/A
44	SEAL, CORD-ASM. STR. RLF.	0		N/A	N/A	N/A	N/A	N/A	N/A	N/A	N/A	N/A
45	• WASHER, FLAT SS.	2		N/A	N/A	N/A	N/A	008773	008773	N/A	008773	008773
▣	REBUILD KIT	1		006165	006165	006165	012376	016804	150993	011334	016804	150993

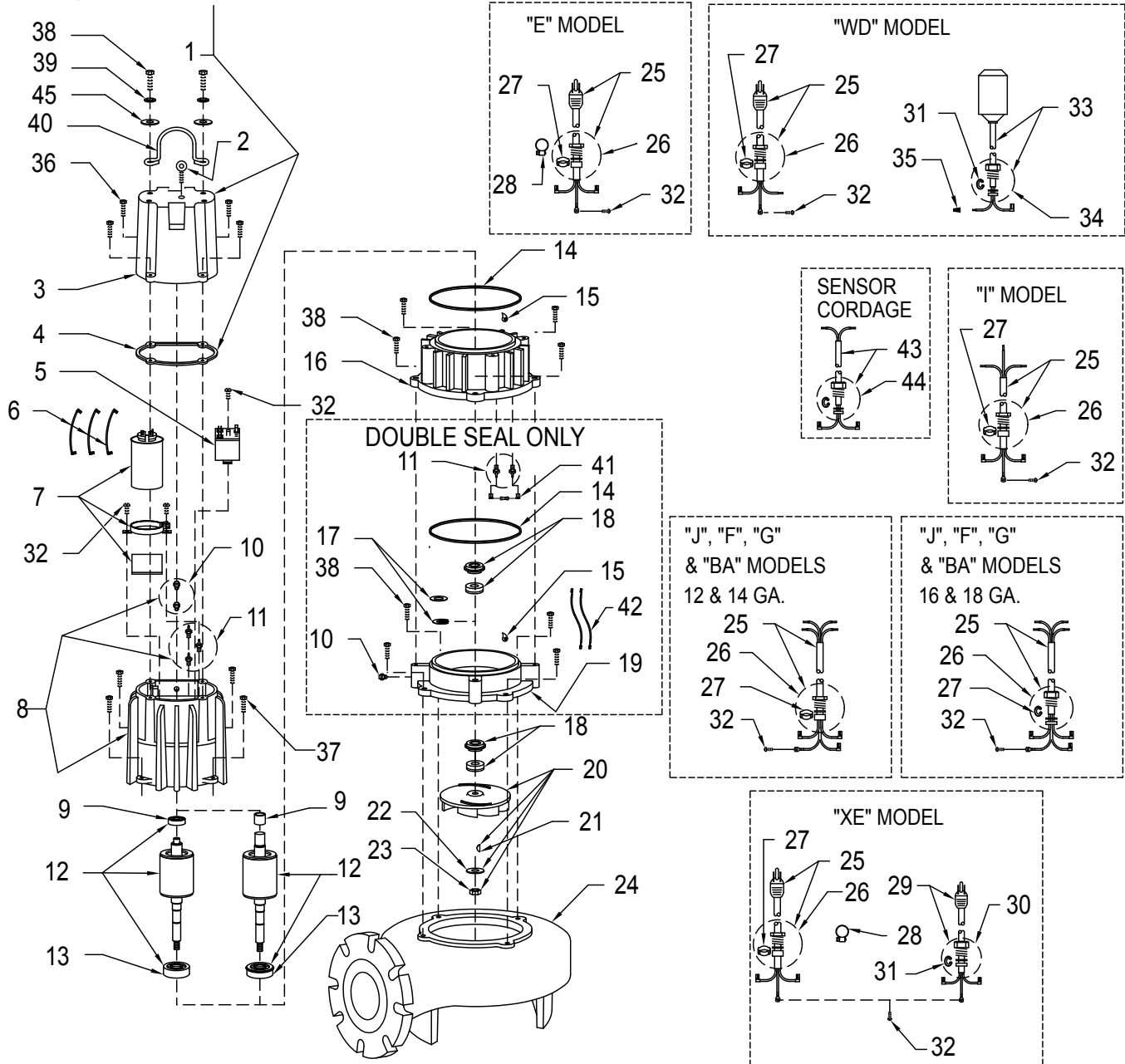
- Items included in Rebuild Kit.
- ▣ Not Shown in Illustration.

NOTES:

- 1) Mtr. Hsg., Brg., Stator & Term (Item 8) are preassembled at the factory and must be replaced as a unit. Stator is permanently attached to the Motor Housing. Plug (Item 10); Seal, Thru Wall Term. (Item 11) and Bearing - Upper (Item 9) are replaceable.
- 2) When ordering Motor Housing, Bearing, Stator and Term. (item 8); or Rotor and Bearing (item 12), specify either GE or Emerson motor.
- 3) If an "X" follows Model No., or Date Mfg. on brass I.D. tag, consult factory for ordering of this part.
- 4) See FM0160 Parts Price Sheet for listing of parts prices.

REPLACEMENT PARTS ILLUSTRATION FOR 405 - ALL MODELS

APPLICABLE CORD,
SEAL, & GROUND SCREW



SK1814



PUMP COMPANY

MAIL TO: P.O. BOX 16347 • Louisville, KY 40256-0347
SHIP TO: 3649 Cane Run Road • Louisville, KY 40211-1961
(502) 778-2731 • 1 (800) 928-PUMP • FAX (502) 774-3624

Your Peace of Mind is Our Top Priority®

visit our web site:
www.zoeller.com